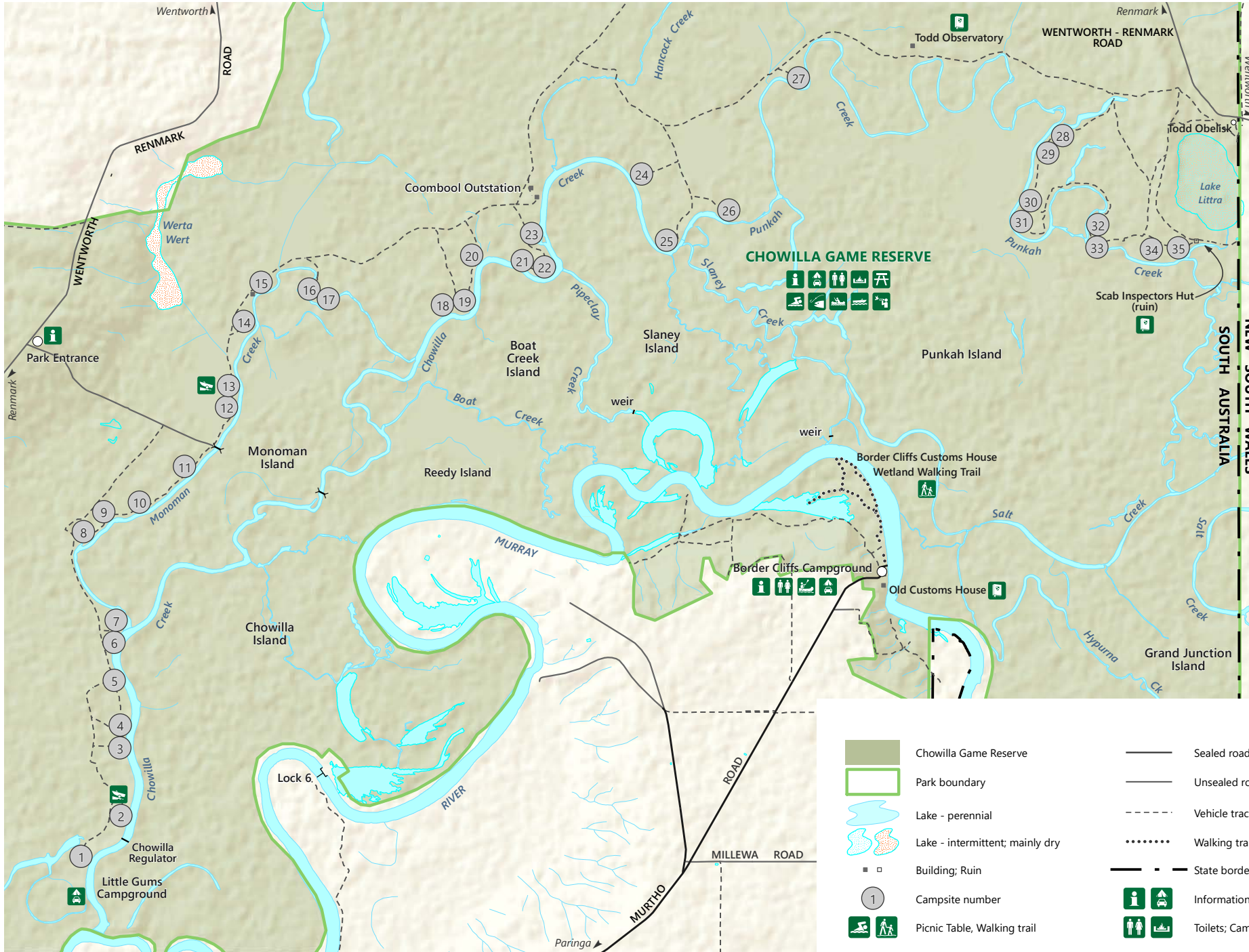


Chowilla Game Reserve

Creekside Campsites



DEW does not guarantee that this map is error free. Use of the map is at the user's sole risk and the information contained on the map may be subject to change without notice. Cartography by DEW, Mapland - 2019

Book online at parks.sa.gov.au
 Get the Avenza PDF Maps app to use park maps on your phone.
 For more information, contact:
 Department for Environment and Water
 E: parks@sa.gov.au
 P: 08 8207 7700

- | | | | | | |
|--|---------------------------------|--|---------------|--|---------------|
| | Chowilla Game Reserve | | Sealed road | | Swimming |
| | Park boundary | | Unsealed road | | Fishing |
| | Lake - perennial | | Vehicle track | | Canoeing |
| | Lake - intermittent; mainly dry | | Walking trail | | Boating |
| | Building; Ruin | | State border | | Boat ramp |
| | Campsite number | | | | Birdwatching |
| | Picnic Table, Walking trail | | | | Historic site |
| | | | | | |
| | | | | | |