

Vulkathunha - Gammon Ranges National Park

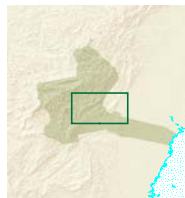
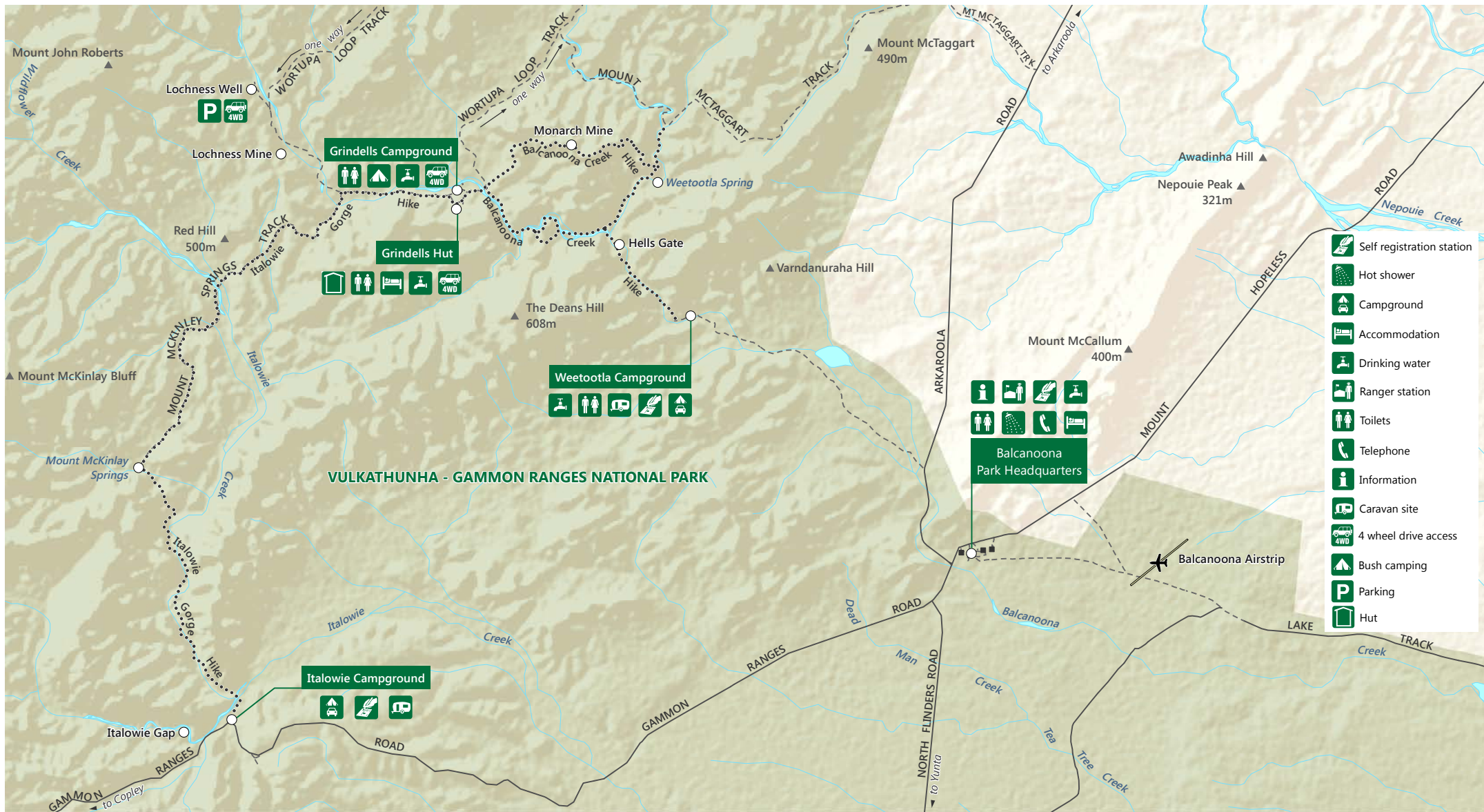
Balcanoona Surrounds



Government of South Australia



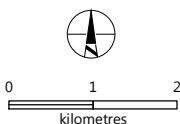
National Parks South Australia



parks.sa.gov.au

DEWNR does not guarantee that this map is error free. Use of the map is at the user's sole risk and the information contained on the map may be subject to change without notice. Cartography by DEWNR, Mapland - 2014

Use this map on your mobile: search Avenza PDF Maps



- Sealed road
- Unsealed road
- Track
- Walking Trail
- Vulkathunha - Gammon Ranges National Park
- Water - perennial, intermittent
- Building, peak

Natural Resources SA Arid Lands

Natural Resources Centre Pt Augusta
T: 08 8648 5300
www.naturalresources.sa.gov.au/aridlands