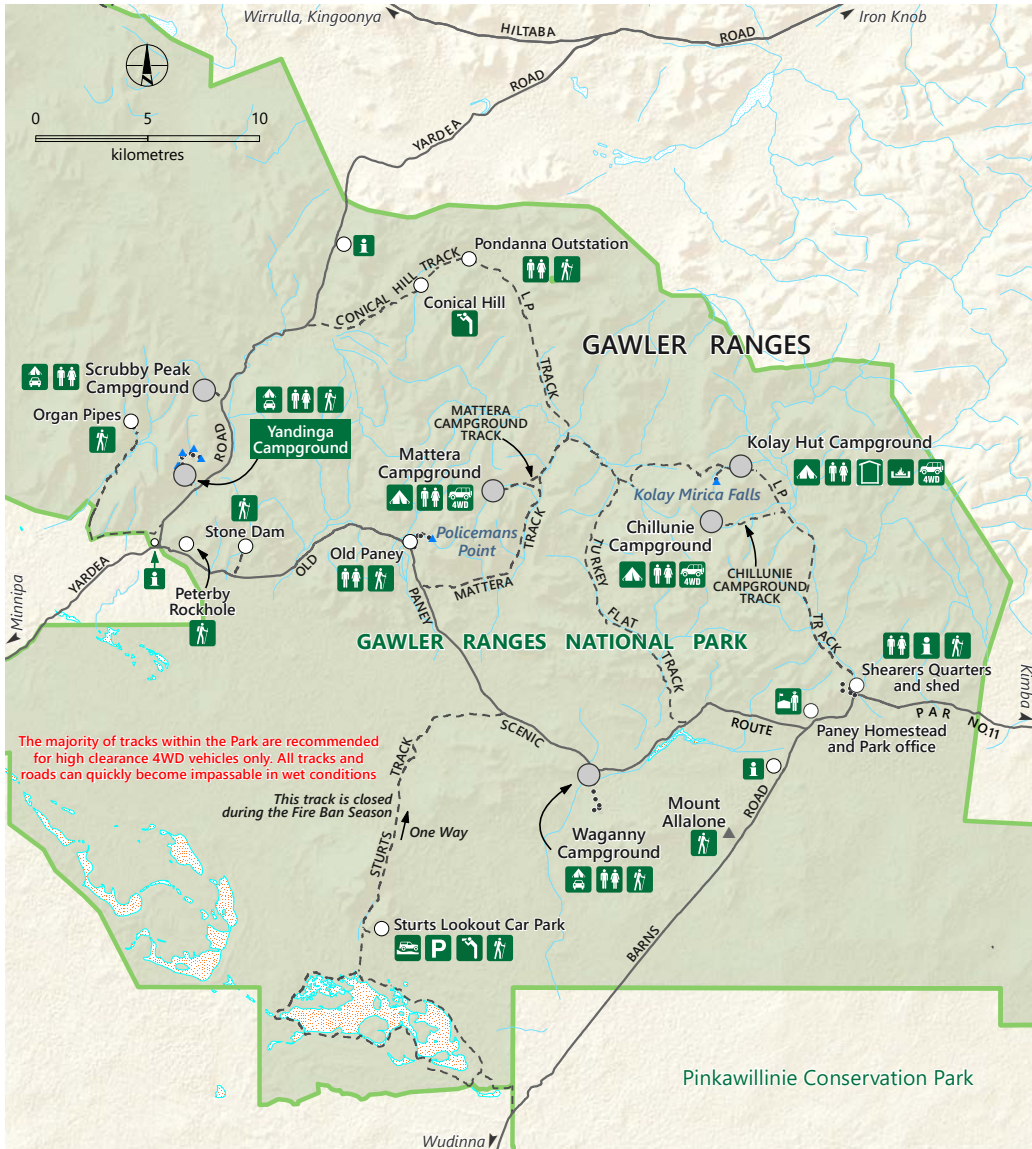
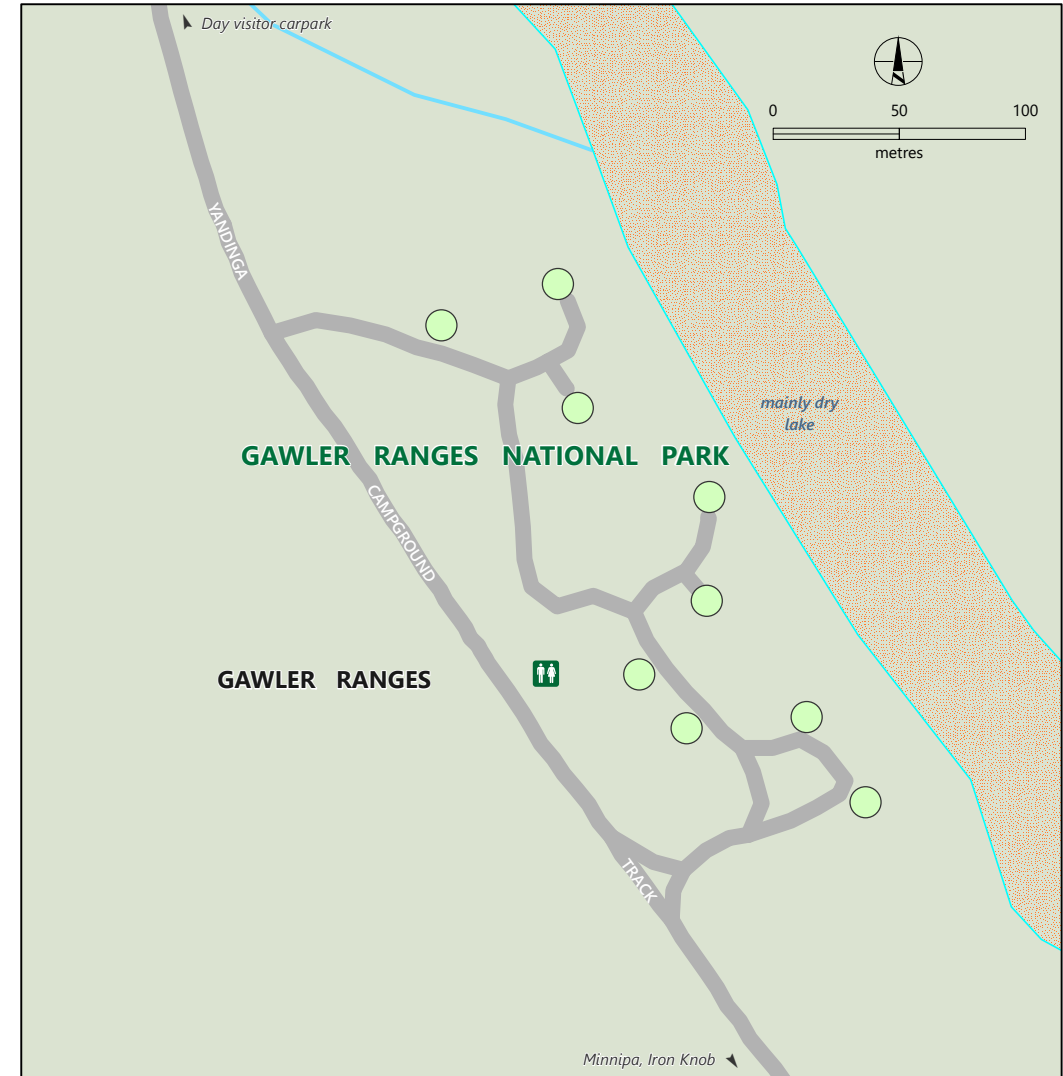


Gawler Ranges National Park



Yandinga Campground



- | | | |
|--|-----------------------|-----------------|
| Gawler Ranges National Park | Lake - mainly dry | Campground |
| Unallocated campsite suitable for caravans, tents or camper trailers | Lake - intermittent | Ranger station |
| Unsealed road | Waterfall; Named hill | Hut |
| Track | Parking; Toilets | Hiking trails |
| Walking trail | Lookout | 4wd access only |

DEW does not guarantee that this map is error free. Use of the map is at the user's sole risk and the information contained on the map may be subject to change without notice.
Cartography by DEW, Mapland - 2020

Book online at parks.sa.gov.au
Get the Avenza Maps app to use park maps on your phone.
For more information, contact:
Department for Environment and Water
E: parks@sa.gov.au
P: 08 8207 7700