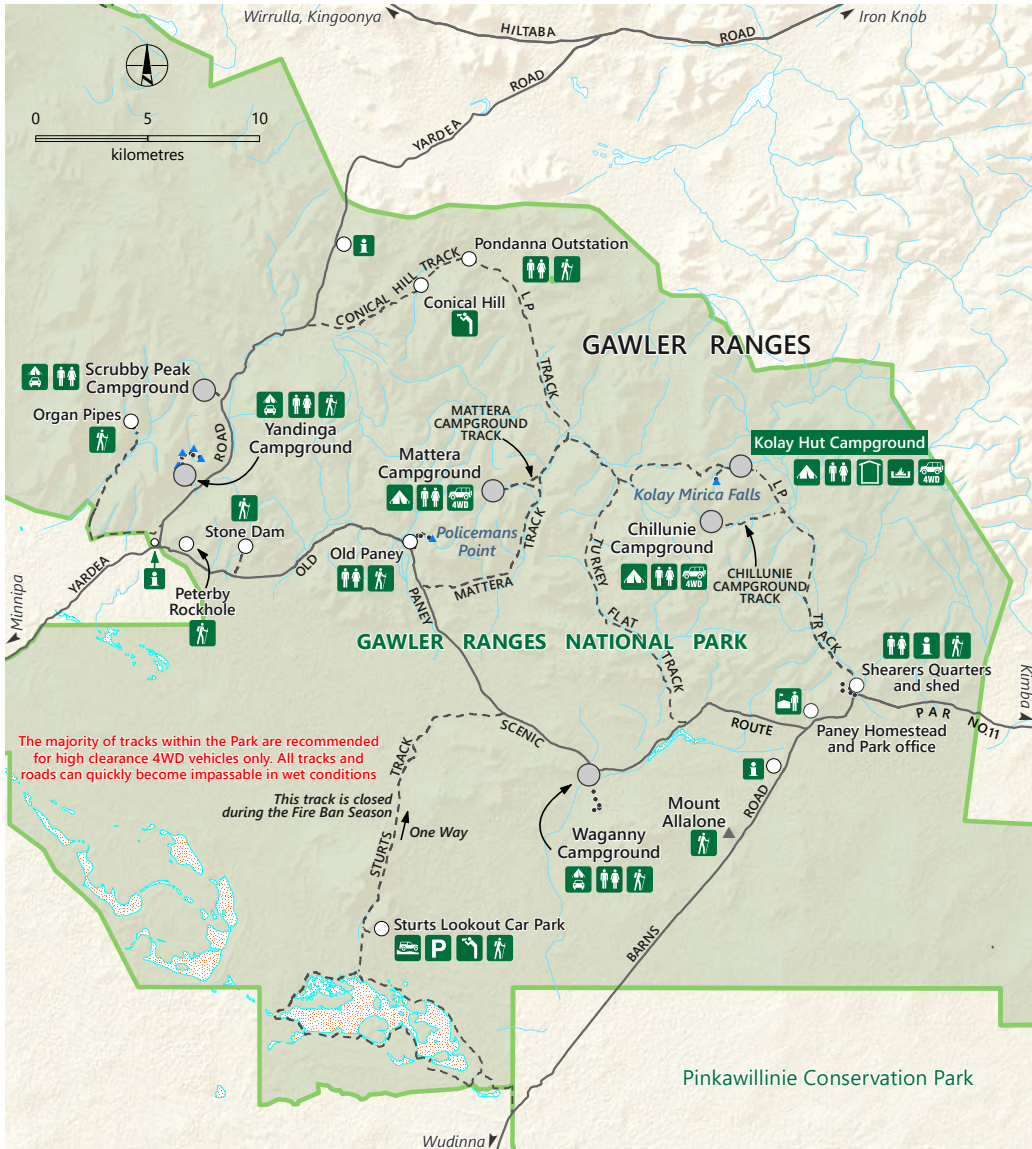


Gawler Ranges National Park



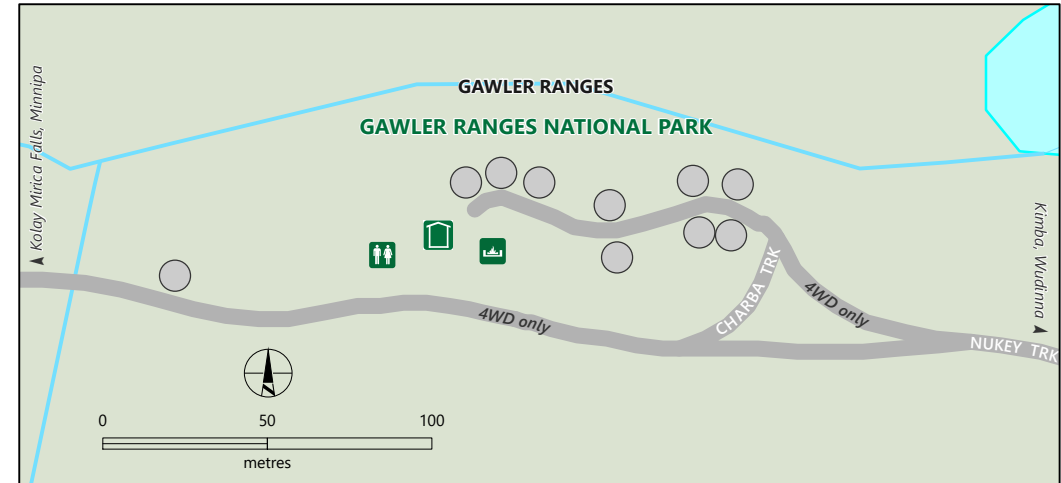
The majority of tracks within the Park are recommended for high clearance 4WD vehicles only. All tracks and roads can quickly become impassable in wet conditions

This track is closed during the Fire Ban Season

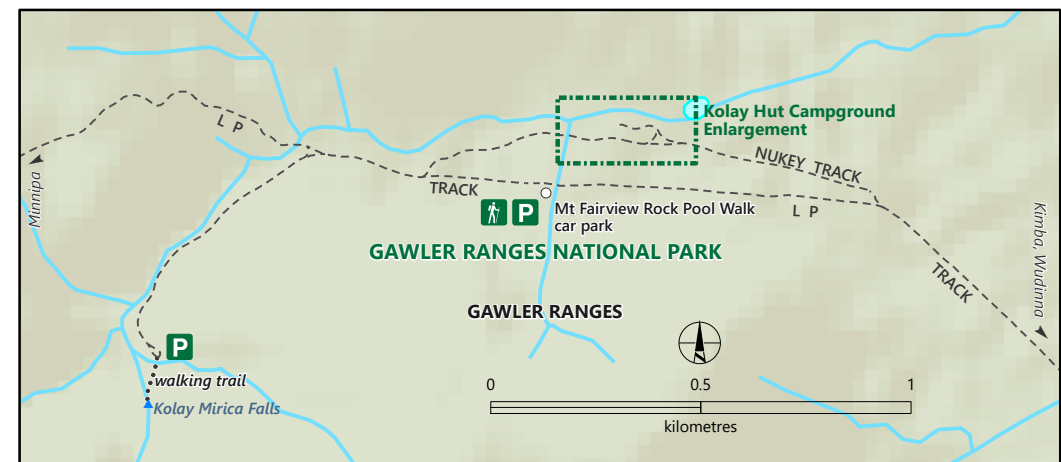


- | | | |
|--|-----------------------|----------------------|
| Gawler Ranges National Park | Lake - mainly dry | Toilets; Lookout |
| Unallocated campsite suitable for tents or camper trailers | Lake - intermittent | Campground; Campfire |
| Unsealed road | Dam | Ranger station; Hut |
| Track | Waterfall; Named Hill | Hiking trails |
| Walking trail | Parking | 4wd access only |

Kolay Hut Campground



Kolay Hut Environs



DEW does not guarantee that this map is error free. Use of the map is at the user's sole risk and the information contained on the map may be subject to change without notice.
Cartography by DEW, Mapland - 2020

Book online at parks.sa.gov.au
Get the Avenza Maps app to use park maps on your phone.
For more information, contact:
Department for Environment and Water
E: parks@sa.gov.au
P: 08 8207 7700