



# Changes to the management of Ikara-Flinders Ranges National Park

*Co-management of the Ikara-Flinders Ranges National Park involves a partnership between the Government of South Australia and the Adnyamathanha people, sharing the responsibility and decision-making for the strategic management of the park.*

## Changes to visitor access to Sacred Canyon

From 1 April 2020, visitor access to Sacred Canyon will change. Access to the site will be through Commercial Tour Operators that are approved to provide Adnyamathanha guided tours. Adnyamathanha guides from Wilpena Pound Resort will be running tours to Sacred Canyon. Access to Sacred Canyon for independent visitors or Commercial Tour Operators without Adnyamathanha guides will no longer occur. The Flinders Ranges by Bike Trail will not be affected.

This change in management will provide visitors to the site with a much richer experience, with the engravings, the country and Adnyamathanha culture interpreted by the Adnyamathanha people. Having visitor access managed by Adnyamathanha guides will also assist with the protection of Sacred Canyon, actively managing people at the site and preventing vandalism to the canyon sandstone walls and the engravings.

Sacred Canyon is located approximately 12 kilometres south east of Wilpena, in the southern section of Ikara-Flinders Ranges National Park. The site preserves ancient engravings of images representing animal tracks, people and waterholes in the sandstone walls of the canyon. It is an area of great cultural significance to the Adnyamathanha people and is part of our national heritage, containing some of the oldest rock engravings in the world.

## Commercial tourism operators that can provide Adnyamathanha guided tours from:



Wilpena Pound Resort (from 1 April 2020)  
[www.wilpenapound.com.au](http://www.wilpenapound.com.au)  
T: 1800 805 802

Any tourism business operators wanting to include a visit to Sacred Canyon in their itineraries will need to liaise with the Wilpena Pound Resort (licensed operator) in order to access the experience.

For further information on Commercial Tour Operator Licensing and Permitting for other sites in the park or other parks and reserves across the state, please visit [parks.sa.gov.au/permits-and-licences/commercial-tour-operators](http://parks.sa.gov.au/permits-and-licences/commercial-tour-operators).

This System aims to enhance opportunities for tourism businesses in South Australia's parks and reserves.

Sacred Canyon was added to the park in 2017 to improve the protection of the site after requests by Adnyamathanha members of the Ikara-Flinders Ranges National Park Co-management Board and the Adnyamathanha people.

The inclusion of this site into Ikara-Flinders Ranges National Park provides the opportunity to ensure the site can be appropriately interpreted to park visitors, as well as being actively managed and protected.

## Wilcolo Campground

A new campground with toilet facilities has been developed along the Wilcolo Track. This new campground will replace the Cooinda campsite inside Wilpena Pound.

The opening of the new Wilcolo campground and the closure of the old Cooinda campsite will also occur on 1 April 2020.

The new Wilcolo campground will be a picturesque camping option for park visitors on the Heysen Trail, Mawson Trail and Flinders Ranges by Bike trail, as well as providing school groups an alternative 'walk in' site for a 'remote' camping experience.

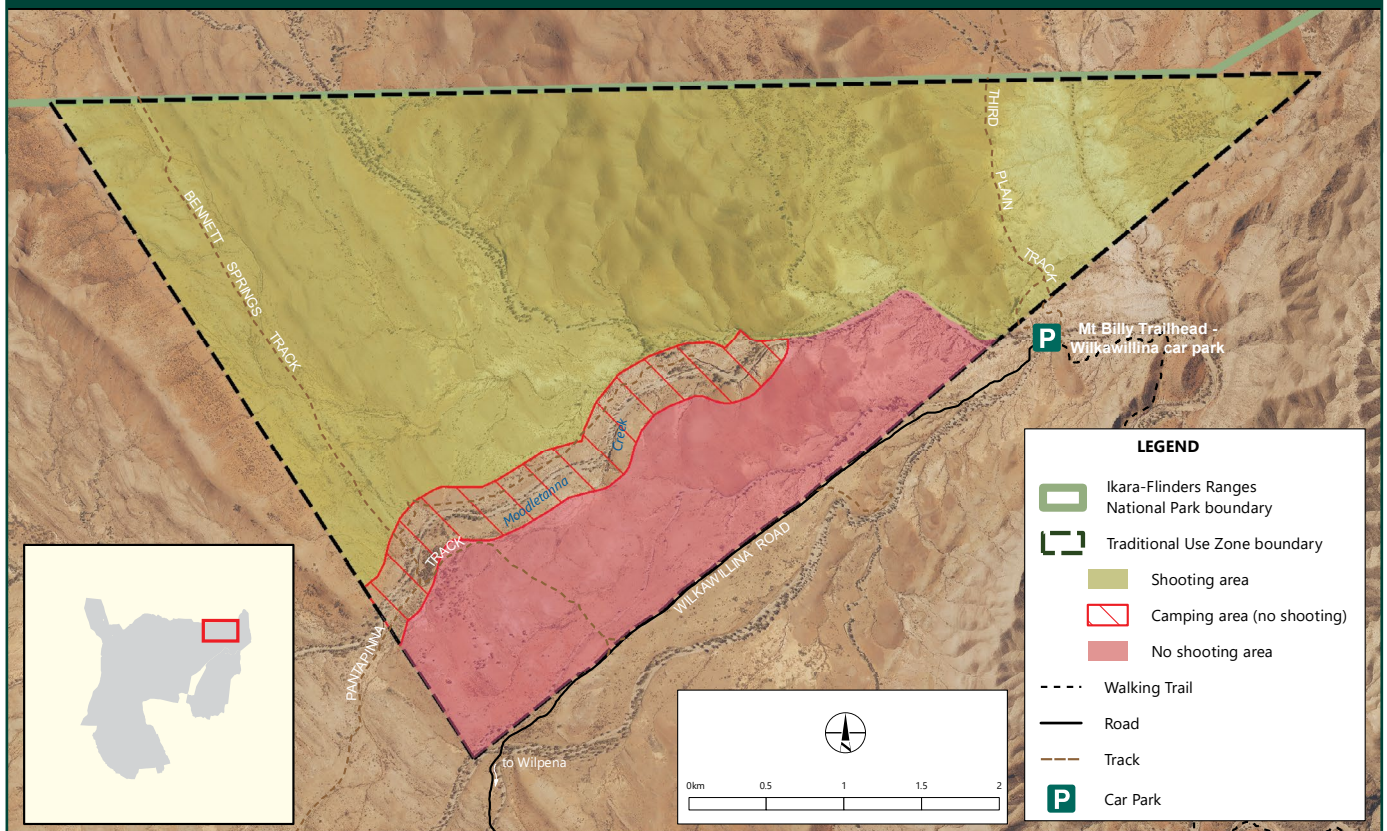
In addition, the Wilcolo campground has new, appropriate toilet facilities for all campground users.

The Wilcolo Campground is open all year round and can be booked online at [parks.sa.gov.au](https://parks.sa.gov.au)

### Proposed Wilcolo Track toilet site



## Ikara-Flinders Ranges National Park Management Plan Zone



### Traditional Use Zone

The Ikara-Flinders Ranges National Park Management Plan sets the vision and guides the management of the National Park. This includes both Adnyamathanha and park management strategies to manage cultural and natural heritage values in the Park.

The Management Plan provides for the establishment of a Traditional Use Zone, ensuring Adnyamathanha people can hunt and gather safely in a protected area, where the general public will not be permitted.

The Traditional Use Zone is located with the Pantapinna Plain Area (near Oraparinna) situated in the north east corner of Ikara-Flinders Ranges National Park.

The Traditional Use Zone will be split into two areas – one that permits the safe use of firearms by Adnyamathanha people, and the second area is a hunting, gathering and camping zone where firearms are not permitted.

Adnyamathanha people can camp, hunt and gather safely in this protected area, where the general public will not be permitted. Firearms can only be used in the shooting area between 3pm and sunrise, throughout the year.

The Board has developed an Operational Policy in consultation with the Adnyamathanha Traditional Lands Association for the safe use of the site.

The Traditional Use Zone will be fenced and signed. Visitors accessing the Wilkawillina Gorge hike and the Flinders Ranges by Bike trail will need to leave the Traditional Use Zone by 3pm each day.



Other co-managed parks and reserves that have Traditional Use Zones to enable Aboriginal people to hunt and gather include Vulkathunha-Gammon Ranges National Park, Malkumba-Coongie Lakes National Park and Innamincka Regional Reserve.

The Traditional Use Zone will be gazetted closed and will become operational on 1 April 2020.

### Flinders Ranges by Bike Track

#### Willow Springs to Gum Creek

The bike trail traverses along the Trail, which is adjacent to the Traditional Use Zone. It will be a requirement that park visitors not access the bike trail from 3pm to sunrise, as firearms may be used in the nearby Traditional Use Zone.

## More information

Alan Harbour, Ranger-in-Charge, Northern Flinders,  
Flinders and Outback Region,  
National Parks and Wildlife Service South Australia  
T: 0428 840 976  
E: [co-management@sa.gov.au](mailto:co-management@sa.gov.au)  
[parks.sa.gov.au](http://parks.sa.gov.au)

 [facebook.com/NPWSSA](https://facebook.com/NPWSSA)  [@nationalparkssa](https://@nationalparkssa)  
**parks.sa.gov.au**

